

Trouble shooting

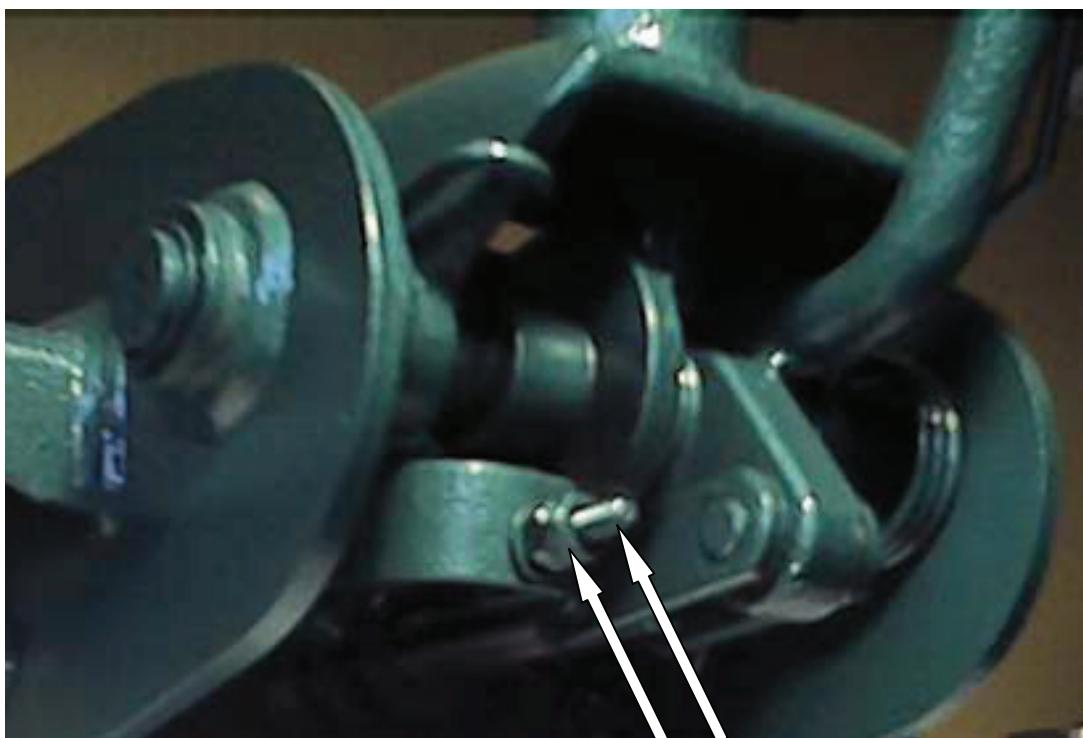
Manuel Compac jacks

The jack will not lift The jack loses height under load

Thank you for providing us with the opportunity to help you.

1. Check and adjustment of the lowering system.

1. Lifting and turning the handle activates the lowering system.
2. Once the handle is in the lowering position the hydraulic system can be "flushed" by pumping the foot pedal 10-15 times.
3. Afterwards turn the handle back in the normal position and hit the lowering rod (A) with a hammer (App. 5 kg. force).
4. Turn the nut (B) on the lowering rod one full turn clock-wise.
5. Continue to "Adjust the lowering system".



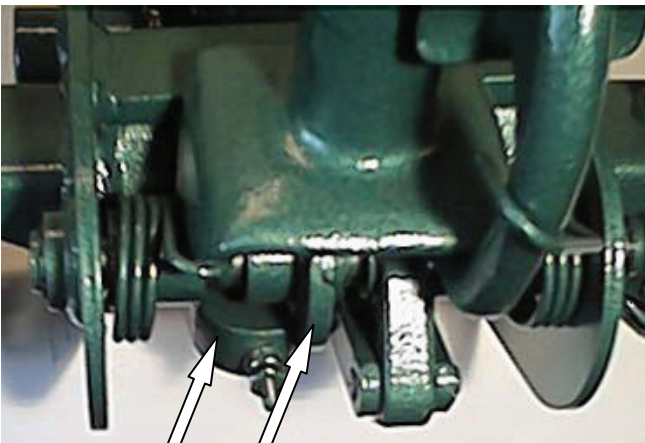
A:
Lowering rod

B:
Nut

B A

Adjust the lowering system:

1. Make sure the handle is in the normal position and standing upright.
2. Loosen the outer nut (F) from the inner nut (E).
3. Use the thumb on your left hand to slowly push the lowering arm (C) up against the hub (D). While holding the lowering arm in this position tighten the inner nut (E) with your finger until the hub (D) cannot move from side to side.
4. Turn the inner nut (E) one more time clock-wise.
5. Check that the distance between the inner nut (E) and the washer (G) is correct. While ensuring that the inner nut (E) stays in this position tighten the outer nut (F) by turning in clock-wise tight up against the inner nut (E). This locks the nuts in position.
6. Should the above procedure not solve the problem please continue to "Checking the pump".



C D

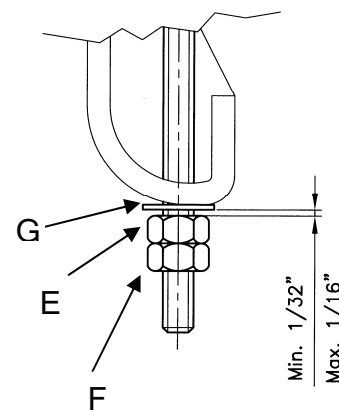
C: Lowering arm

D: Hub

E: Inner nut

F: Outer nut

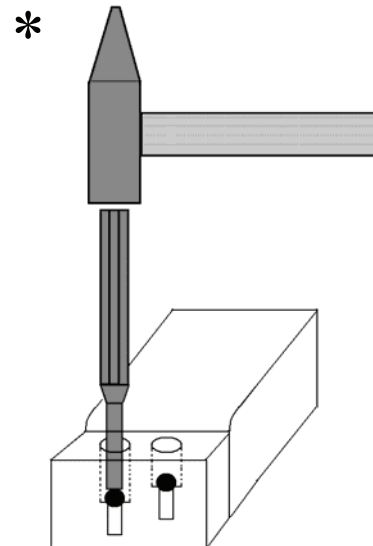
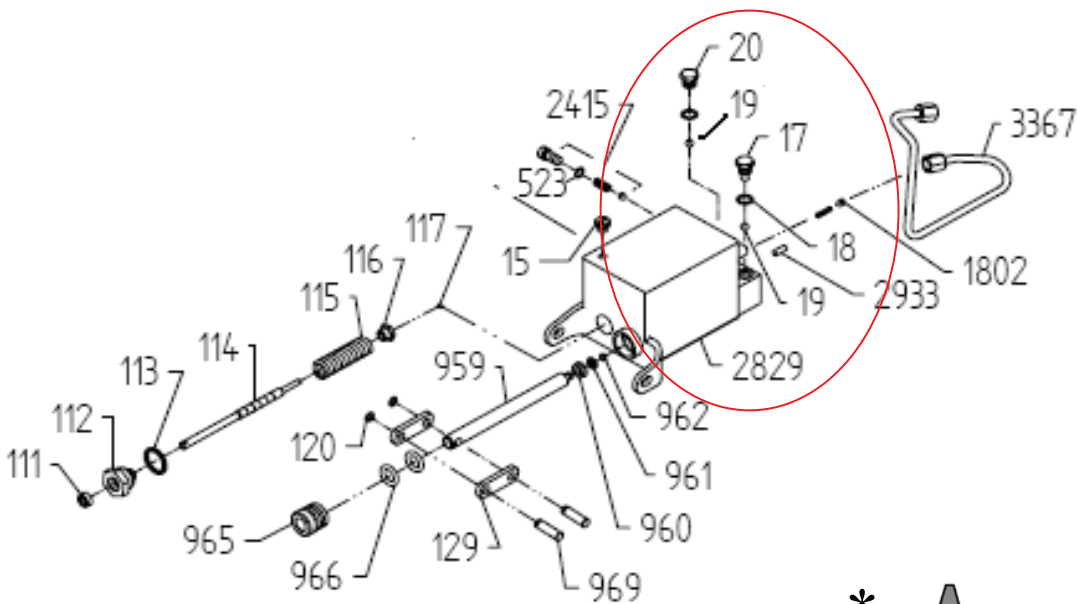
G: Washer



Min. 1/32" = 0,8 mm
Max 1/16" = 1,6 mm

Checking the pump

1. Check the oil level in the pump. Loosen screw #15. Use a clean metal object to measure the oil level. The correct oil level is 10 mm under the filling hole when the lifting arm is in the lowered position.
2. Loosen bolt # 20 and take the ball # 19 up from the hole. Check and clean the hole and make sure no dirt remains. Put the ball back in the hole and (*hit it with a punch or another hard object). Put the parts back together.
3. Loosen bolt # 17 and take the ball # 19 up from the hole. Check and clean the hole and make sure no dirt remains. Put the ball back in the hole and (*hit it with a punch or another hard object). Put the parts back together.



Should none of the recommended procedures solve the problem then please contact Compac or the nearest authorised Compac repairer.